

भारत सेवा संस्थान
लखनऊ

वी. एन. एन. कार्यालय
गुण्डाबाग संस्था 889 दिनांक 26-12-2023

निविदा सं०— ०३ — / भा०से०सं० / 2023-24

भारत सेवा संस्थान श्रद्धेय चन्द्रभानु गुप्त स्मारक नवचेतना केन्द्र भवन, 10-अशोक मार्ग, लखनऊ के भवन निर्माण/मरम्मत आदि कार्य कराये जाने हेतु मोहरबन्द निविदाएं नियम व शर्तों सहित दिनांक 08.01.2024 अपराह्न 2:00 बजे तक आमंत्रित की जाती है। पूर्ण विवरण के लिए वेबसाइट www.bharatsevasansthan.com पर देखने का कष्ट करें।

सभी इच्छुक ठेकेदार अपनी निविदा के साथ कार्य अनुभव, फर्म का रजिस्ट्रेशन, जीएसटी रजिस्ट्रेशन, आधार कार्ड, पैन कार्ड की सत्यापित प्रति लगाते हुए रु० 50,000/- (रुपया पचास हजार मात्र) की धरोहर राशि बैंक ड्राफ्ट/बैंकर चेक जो "भारत सेवा संस्थान" के नाम से लखनऊ में देय हो, जमा करेंगे। प्राप्त निविदाएं दिनांक 08.01.2024 को सायंकाल 3:00 बजे भारत सेवा संस्थान, 2-राणा प्रताप मार्ग, मोतीमहल, लखनऊ में बोर्ड के समक्ष खोली जायेगी, जिसमें निविदाकर्ता/फर्म के प्रतिनिधि अपनी उपस्थिति सुनिश्चित करेंगे।

सहामंत्री

भारत सेवा संस्थान

2-राणा प्रताप मार्ग

मोतीमहल, लखनऊ-226001

RENOVATION WORK AT NAV CHETNA KENDRA

KARTIKEYA ENTERPRISES

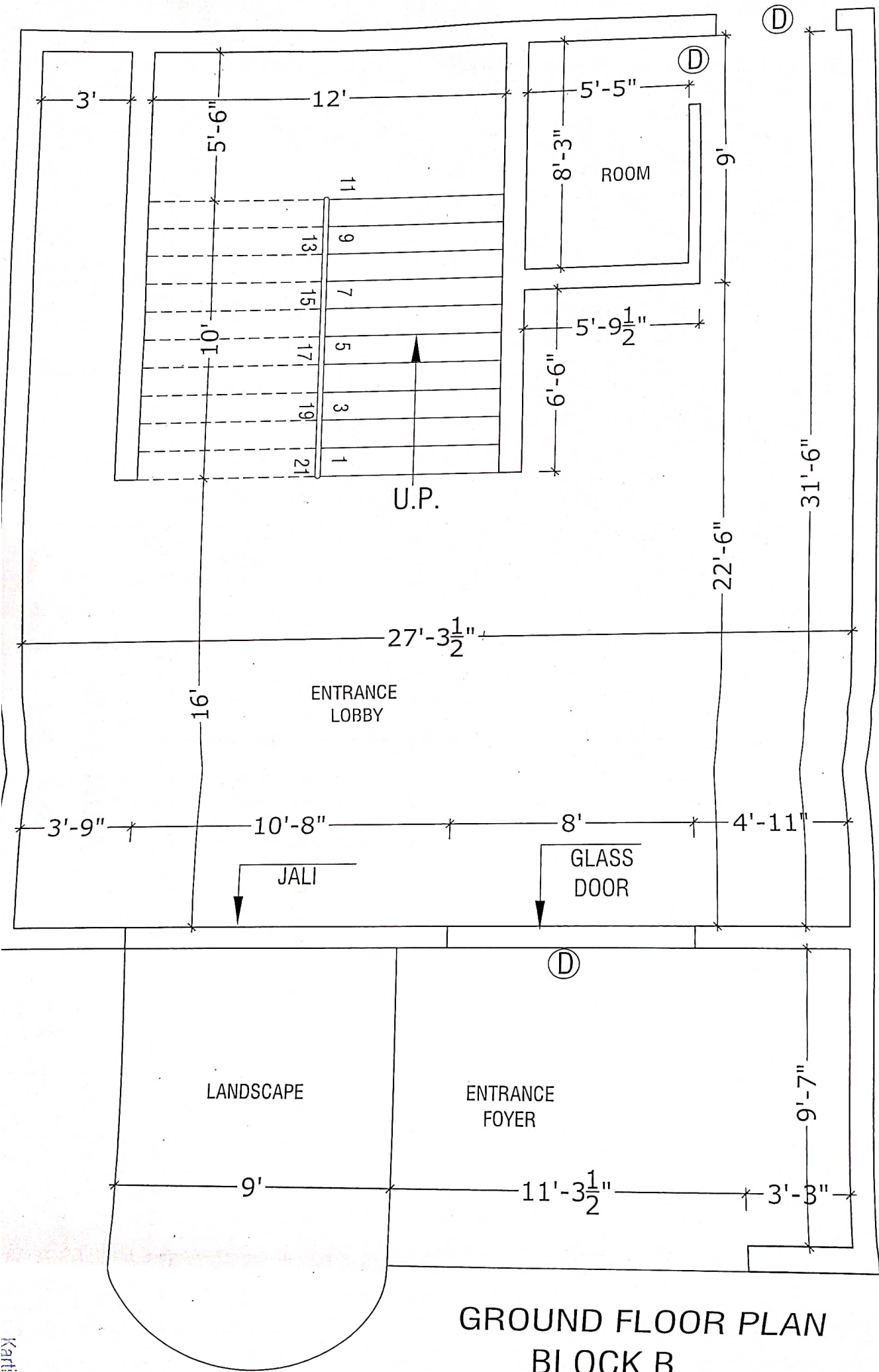
Sr. No.	Description of Work	Unit	Quantity	Rate [In Rs.]	Amount [In Rs.]
[A] BLOCK-A					
1]	Removing and demolition of 40 mm thick floor surface and (lift and shifting) upto the distance 3 km.	SQM	1465		
2]	STAIR CASE /LOBBY FLOORING - Providing & fixing of 15 mm thick granite slab , raw silk / cera grey / as approved flooring laid over 20 mm [average] thick 1:4 cement mortar base and jointed with grey cement slurry mixed with pigment to match the shade of the stone, including grinding and edge moulding , work should be complete in all respect and as per approved drawing to the satisfaction of Engg. [Granite Stone Shall be Provided by OWNER as an Option]	SQM	1465		
3]	Removing and demolition of 12 mm thick old painting/plaster surface and (lift and shifting) upto the distance 3 km.	SQM	2650		
4]	Mechanical sanding, providing and applying two or more coat of white colour premium quality of acrylic emulsion paint of approved brand over layer of putty including P.O.P. punning [4 - 6 mm] with water thinnable priming coat complete in all respect and satisfaction of Engg. in - charge. As per colour scheme.	SQM	2650		
U-PVC Windows					
5]	Designing, providing, fabricating and fixing of U-pvc joinery work in Windows & Ventilator, Aluminum Section shall be Aluminum Section 15 micron powder coated (white color) as per approved sample, as per details, design & drawing. including weather strips, anti- rusting pads, glazing beads, and other fittings, fixtures & hardware, joinery shall factory-made mechanical junctions with concealed fixing and sealing with sealant as per approved samples. All items receiving fittings and fixtures shall be strengthened and lapped as required, the associate or supplier shall prepared shop drawings & get approval from P.M / Client.	SQM	310		
SS RAILING					
6]	Removing and demolition of M.S. Railing and (lift and shifting) upto the distance 3 km.				
7]	Providing and laying out the new SS railing to all floor	RMT	410		
False-ceiling					
8]	Providing and fixing false-ceiling at all height including providing and fixing of frame work made of special section, power pressed from M.S. sheet and galvanized with zinc coating of 120 gm per sqm (both side inclusive) as per IS:277 and consisting of angle cleats of size 25 mm wide *1.6 mm thick with flanges of 27 mm and 37 mm , at 1200mm center to center ,one flanges fixed to the ceiling with dash fastner 12.5mm dia*50mm long with 6mm dia bolt , other flange of cleat fixed to the angle hanger of primer suitable 600*600 false -ceiling tile of with 8watt concealed lights and board all as per manufacture specification and standard.	SQM	1125		
[B] BLOCK-B					
1]	Removing and demolition of 40 mm thick floor surface and (lift and shifting) upto the distance 3 km.	SQM	652		
2]	STAIR CASE /LOBBY FLOORING - Providing & fixing of 15 mm thick granite slab , raw silk / cera grey / as approved flooring laid over 20 mm [average] thick 1:4 cement mortar base and jointed with grey cement slurry mixed with pigment to match the shade of the stone, including grinding and edge moulding , work should be complete in all respect and as per approved drawing to the satisfaction [Granite Stone Shall be Provided as an Option]	SQM	652		
3]	Removing and demolition of 12 mm thick old painting/plaster surface and (lift and shifting) upto the distance 3 km.		1215		
4]	Mechanical sanding, providing and applying two or more coat of white colour premium quality of acrylic emulsion paint of approved brand over layer of putty including P.O.P. punning [4 - 6 mm] with water thinnable priming coat complete in all respect and satisfaction of Engg. in - charge. As per colour scheme.	SQM	1215		
U-PVC Windows					
5]	Designing, providing, fabricating and fixing of U-pvc joinery work in Windows & Ventilator, Aluminum Section shall be Aluminum Section 15 micron powder coated (white color) as per approved sample, as per details, design & drawing. including weather strips, anti- rusting pads, glazing beads, and other fittings, fixtures & hardware, joinery shall factory-made mechanical junctions with concealed fixing and sealing with sealant as per approved samples. All items receiving fittings and fixtures shall be strengthened and lapped as required, the associate or supplier shall prepared shop drawings & get approval from P.M / Client.	SQM	415		
SS RAILING					
6]	Removing and demolition of M.S. Railing and (lift and shifting) upto the distance 3 km.				
7]	Providing and laying out the new SS railing to all floor	RMT	65		
False-ceiling					

8]	Providing and fixing false-ceiling at all height including providing and fixing of frame work made of special section, power pressed from M.S. sheet and galvonised with zinc coating of 120 gm per sqm (both side inclusive) as per IS:277 and consisting of angle cleats of size 25 mm wide *1.6 mm thick with flanges of 27 mm and 37 mm , at 1200mm center to center ,one flanges fixed to the ceiling with dash fastner 12.5mm dia*50mm long with 6mm dia bolt , other flange of cleat fixed to the angle hanger of primer suitable 600*600 false -ceiling tile of With 8 watt conceled light board all as per manufacture specification and standard.Including parking area also.	SQM	725		
Maintenance and repairing of all MCB board and Installition of new MCBs					
9]	Supplying and fixing testing following way, three pole and neutral, sheet steel ,MCB distribution board, 415 volt, on surface or recess complete with tinned copper bus bar, neutral bus bar, earth bar, din bar, detachable gland plate, interconnections. phosphatized and powder painted including earthing as extra as required but without MCCB/RCCB/ISOLATOR	NOS.	7		
Fire doors					
10]	Designing, providing, fabricating and fixing of M.S joinery work in Windows & Ventilator, Aluminum Section shall be Aluminum Section 15 micron powder coated (white color) as per approved sample, as per details, design & drawing. including weather strips, anti-rusting pads, glazing beads, and other fittings, fixtures & hardware, joinery shall factory-made mechanical junctions with concealed fixing and sealing with sealant as per approved samples. All items receiving fittings and fixtures shall be strengthened and lapped as required, the associate or suppler shall prepared shop drawings & get approval from P.M / Client.	NOS.	5		
Toilets blocks					
11]	Removing and demolition of 12 mm thick old painting/plaster surface and (lift and shifting) upto the distance 3 km.				
12]	Providing and fixing water closet squatting pan (Indian type W.C. pan) with 100 mm sand cast Iron P or S trap, 10 litre low level white P.V.C. flushing cistern, including flush pipe, with manually controlled device (handle lever) conforming to IS : 7231, with all fittings and fixtures complete, including cutting and making good the walls and floors wherever required				
13]	Providing and fixing white vitreous china extended wall mounting water closet of size 780x370x690 mm of approved shape including providing & fixing white vitreous china cistern with dual flush fitting, of flushing capacity 3 litre/ 6 litre (adjustable to 4 litre/ 8 litres), including seat cover, and cistern fittings, nuts, bolts and gasket etc complete. [Optional - W.C. Set shall be provided by client]				
14]	Providing and fixing Chlorinated Polyvinyl Chloride (CPVC) pipes, having thermal stability for hot & cold water supply, including all CPVC plain & brass threaded fittings, including fixing the pipe with clamps at 1.00 m spacing. This includes jointing of pipes & fittings with one step CPVC solvent cement and testing of joints complete as per direction of Engineer in Charge.				
15]	Providing and fixing Polyvinyl Chloride (PVC) pipes, having thermal stability for hot & cold water supply, including all CPVC plain & brass threaded fittings, i/c fixing the pipe with clamps at 1.00 m spacing. This includes jointing of pipes & fittings with one step PVC solvent cement and the cost of cutting chases and making good the same including testing of joints complete as per direction of Engineer in Charge.				
16]	Providing and fixing water closet squatting pan (Indian type W.C. pan) with 100 mm sand cast Iron P or S trap, 10 litre low level white P.V.C. flushing cistern, including flush pipe, with manually controlled device (handle lever) conforming to IS : 7231, with all fittings and fixtures complete, including cutting and making good the walls and floors wherever required				
E	TOTAL Work includes	NOS.	2		
	Installation of lift (OTIS, OSUN,UNIQUE, JOHNSON and other standard etc.)	NOS.	2		

Terms and conditions:

- 1- A sum of Rs. 50,000/- as earnest money along with tender documents through Bank Draft in the name of Bharat Seva Sansthan.
- 2- All documents including drawings are to be signed by the tenderer failing which the tender shall be rejected without giving any reason.
- 3- Tenderers can be asked to submit their analysis of rates justifying their quoted rates.
- 4- Last date for depositing of tender is 08.01.2024 at 2:00 PM and tender will be opened on same date at 3:00PM. .
- 5- No advance can be sanctioned to contractors.
- 6- After completion of work payment will be made on submission of bill through Unit Incharge. 8. 5% security will be retained from final bill, which will be returned without interest on completion of one year. In case any defect found in work, contractor will get repaired, otherwise security will be forfeited

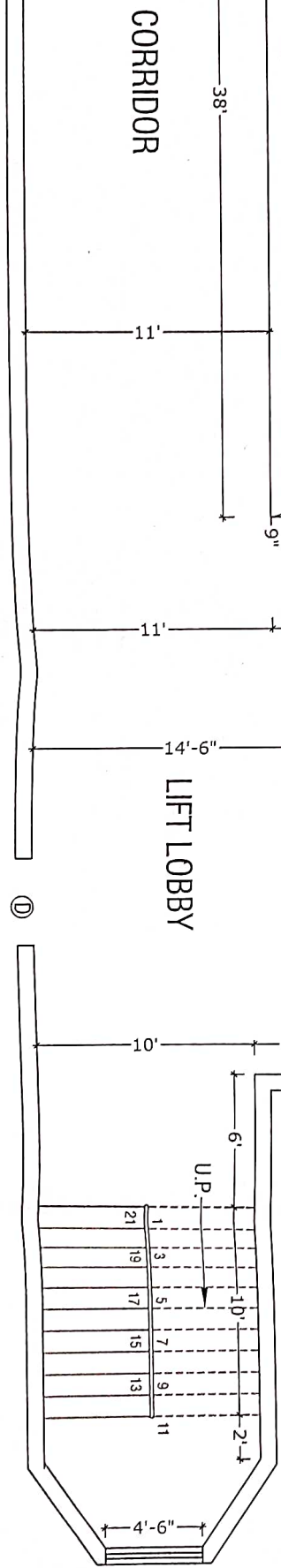
SD
General Secretary
Bharat Seva Sansthan
2- Rana Pratap Marg
Moti Mahal Lucknow



**GROUND FLOOR PLAN
BLOCK B**

GROUND FLOOR
BLOCK B-2

CORRIDOR



CORRIDOR

LIFT LOBBY

PASSAGE

PASSAGE

LIFT

LIFT

U.P.

- 1
- 3
- 5
- 7
- 9
- 11
- 13
- 15
- 17
- 19
- 21

TYPICAL 1ST TO 8TH FLOOR
BLOCK B-2

